

PART OF THE NE.1/4, OF SECTION 30, T.7N., R.1E., S.L.B. & M.

296

# VERHAAL SUBDIVISION

IN WEBER COUNTY

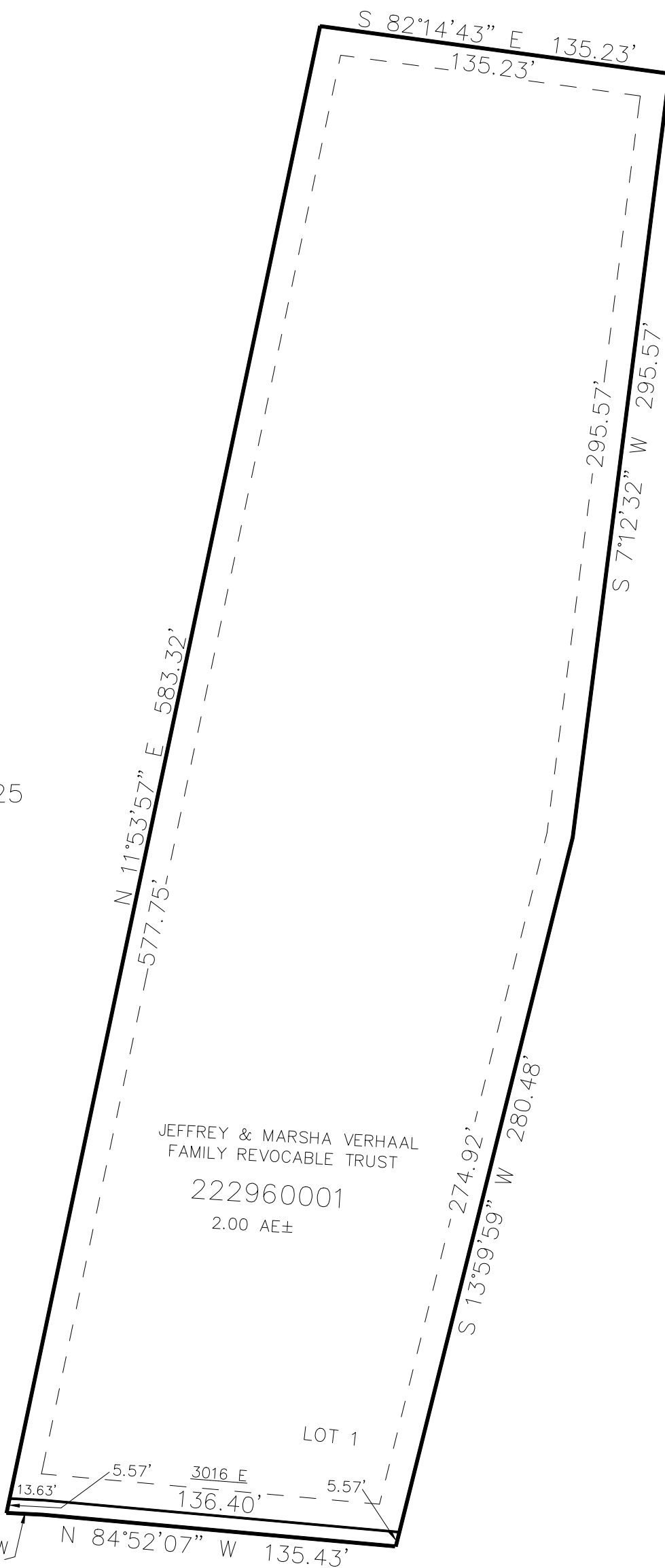
TAXING UNIT: 36

SCALE 1" = 50'

SEE PAGE 25

SEE PAGE 25

SEE PAGE 25



JEFFREY & MARSHA VERHAAL  
FAMILY REVOCABLE TRUST

222960001

2.00 AE±

LOT 1

FOR COMPLETE ENG DATA SEE  
ORIGINAL DEDICATION PLAT IN  
BOOK 69, PAGE 81 OF RECORDS.

10' UTILITY & DRAINAGE EASEMENTS EACH  
SIDE OF PROPERTY LINES AS INDICATED  
BY DASHED LINES EXCEPT AS OTHERWISE  
SHOWN.

SEE PAGE 25